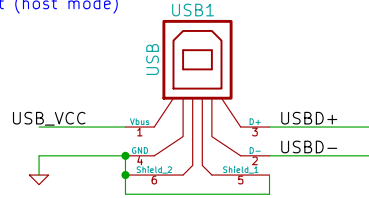
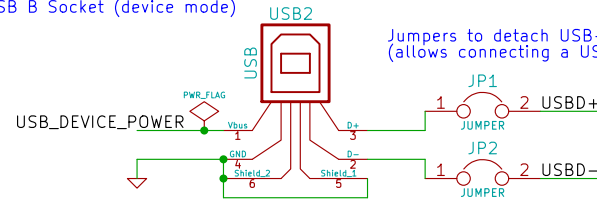


USB A Socket (host mode)



USB B Socket (device mode)

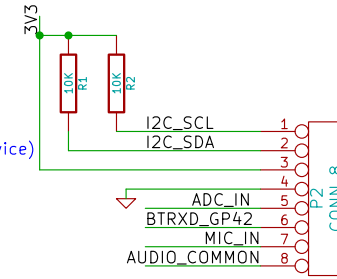


Jumpers to detach USB-B from USB-A  
(allows connecting a USB charger & a USB device)

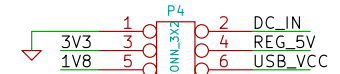
Jumper USB host power from either onboard reg or DC In



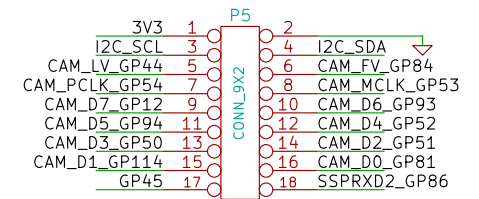
I2c + Misc



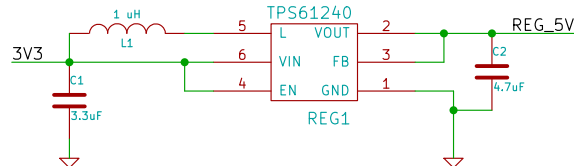
Power



Camera



USB Battery Power – 3.3V to 5V Boost Converter (approx 350mA output)



File: z2breakout.sch

Sheet: /

Title:

Size: A4

Date: 7 nov 2013

Rev:

KiCad E.D.A.

Id: 1/1